

Infrared Inspection Report

for

A. BCD Inc.

123 West 110th Street

Anytown, PA 01234

Distribution Panels

Motor Control Centers

DA Mechanical Services

Report Summary

Job Number: X85-7854

Report Date: 11/6/2005
Job Number: X85-7854
Date of Inspection: 11/5/2005
End User: Ray Miller
Inspection of: Distribution Panels
Motor Control Centers

Thermographer: Dominique Akermann
Qualified Assistant(s) John Meyer / AC Electrical Inc.

NETA Maintenance Testing Spec MTS-2005

Priority	Delta T between similar components	Delta T over ambient air	Recommended Action
4	1 to 3 C	1 to 10 C	Possible deficiency; warrants investigation
3	4 to 15 C	11 to 20 C	Possible deficiency; repair as time permits
2	-----	21 to 40 C	Monitor until corrective measures can be accomplished
1	>15 C	>40 C	Major discrepancy; repair immediately

Inspected Equipment

Location: A. BCD Inc.	Label or #	Equipment ID	In Service	Priority	Page	Note
Main Supply Room	MDP1	Main Distribution Panel	yes			
	MDP2	Main Distribution Panel	yes			
	MDP3	Main Distribution Panel	yes			
Boiler Room	DP1	Distribution Panel	yes			
	LP1	Light Panel	yes			X
	LP1A	Light Panel	yes			
	EMDP	Exhaust Air Fans 1-7 Breaker	yes	1	4	
Other Electrical Equipment						
		#2 Process Hot Water Pump	yes			
		#1 Process Hot Water Pump	yes			
		Boiler #2 Main Panel	yes			
		Boiler #1 Main Panel	no			
Process Room A	DP2	Distribution Panel - Breaker #9	yes	3	5	
	MCC-5	Blower Panel - Breaker M35	yes	3	6	
	MCC-9	Cutter Panel - Fuse	yes	3	7	
	LP2	Light Panel	yes			
Process Room B	DP3	Distribution Panel	yes			
	LP3	Light Panel	yes			
	MCC-6	Disconnect M23	yes	3	8	
	MCC-4	Drum Contactor	yes	3	9	
Warehouse	DP2-1	Distribution Panel	yes			
	LP4	Light Panel	yes			
	MCC-3	Conveyor Panel Fuse	yes	3	10	
Office	LP5	Light Panel	yes			

Note: X clean panel
Y missing covers

DA Mechanical Services

No.: 1
Job-No.: X85-7854
Date: 11/5/2005

Location: A. BCD Inc.
Room / Building: Boiler Room Equipment: EMPD - Breaker Exhaust Fans 1-7

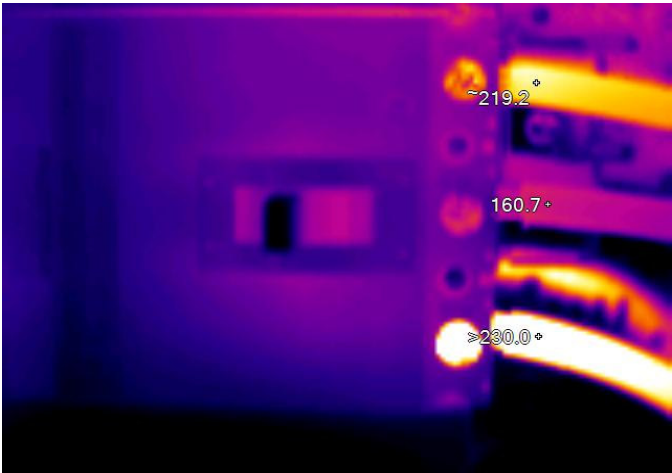
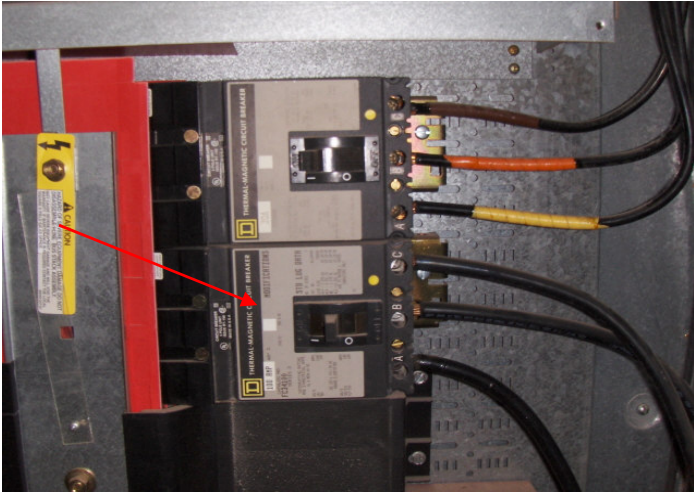
Rated Load: 100 A Measured Load: 95.0 A
% Load 95 %

Ampere Phase A 91.0
Ampere Phase B 92.0
Ampere Phase C 95.0

Ambient Temp.: 20 °C
Comments: Reduce load, check connections, check wiring etc. Breaker tripped after ampere measurement.

Obj. Priority: 1 Subj. Priority: Avg. Priority:

Repair Check Date:
Notes:



Reserved for Thermogram
after Component Repair

DA Mechanical Services

No.: 2
Job-No.: X85-7854
Date: 11/5/2005

Location: A. BCD Inc.
Room / Building: Process Room A Equipment: DP2 - Breaker #9

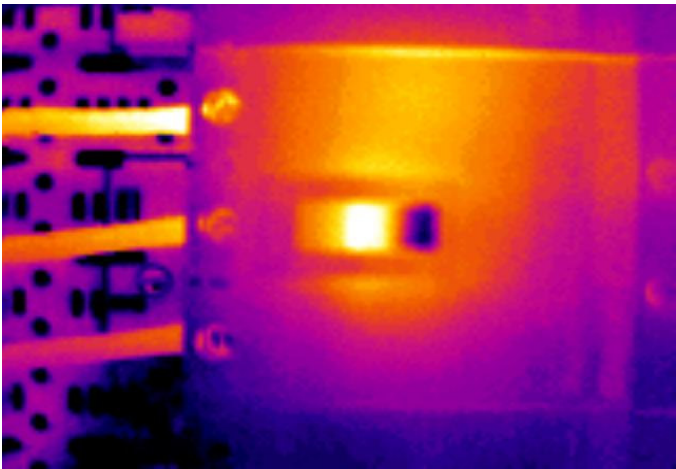
Rated Load: 100 A Measured Load: 36.0 A
% Load 36 %

Ampere Phase A 36.0
Ampere Phase B 34.9
Ampere Phase C 34.5

Ambient Temp.: 20 °C
Comments: 5 C temperature difference between Phase A to C. Check load, connections etc.

Obj. Priority: 3 Subj. Priority: Avg. Priority:

Repair Check Date:
Notes:



Reserved for Thermogram
after Component Repair

DA Mechanical
Services

No.: 3
Job-No.: X85-7854
Date: 11/5/2005

Location: A. BCD Inc.
Room / Building: Process Room A Equipment: MCC-5 Blower Panel Breaker M35

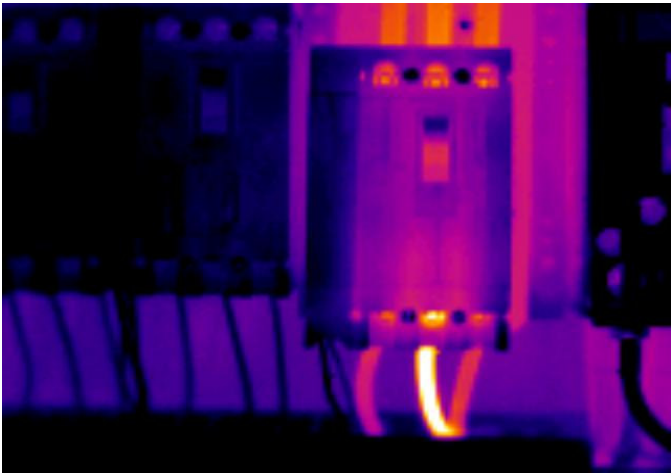
Rated Load: 100 A Measured Load: 51.0 A
% Load 51 %

Ampere Phase A 48.0
Ampere Phase B 51.0
Ampere Phase C 49.0

Ambient Temp.: 20 °C
Comments: 4 C temperature difference between Phase A to B. Check load, connections etc.

Obj. Priority: 3 Subj. Priority: Avg. Priority:

Repair Check Date:
Notes:



Reserved for Thermogram
after Component Repair

DA Mechanical Services

No.: 4
Job-No.: X85-7854
Date: 11/5/2005

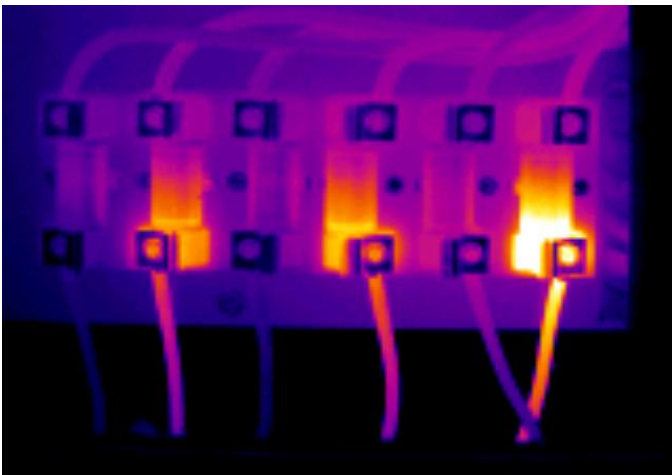
Location: A. BCD Inc.
Room / Building: Process Room A Equipment: Cutter Panel Fuse

Rated Load:	A	Measured Load:	23.0 A
		% Load	%
Ampere Phase A	23.0		
Ampere Phase B	22.0		
Ampere Phase C	23.0		

Ambient Temp.: 20 °C
Comments: Fuse 2, 4 & 6. Check connections and clean connections.

Obj. Priority: 3 Subj. Priority: Avg. Priority:

Repair Check Date:
Notes:



Reserved for Thermogram
after Component Repair

DA Mechanical Services

No.: 5
Job-No.: X85-7854
Date: 11/5/2005

Location: A. BCD Inc.
Room / Building: Process Room B Equipment: MCC-6 Disconnect M23

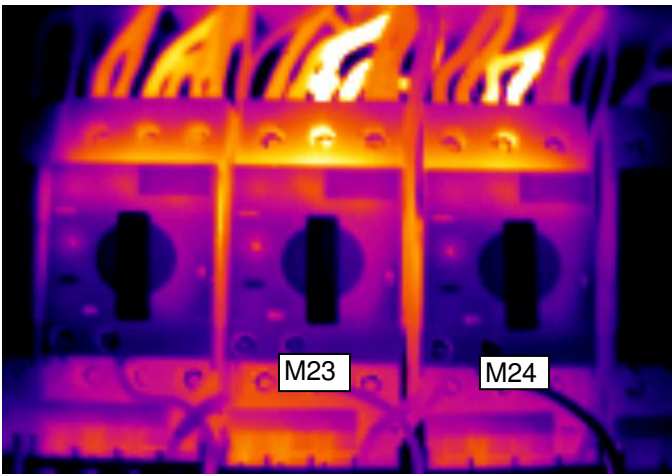
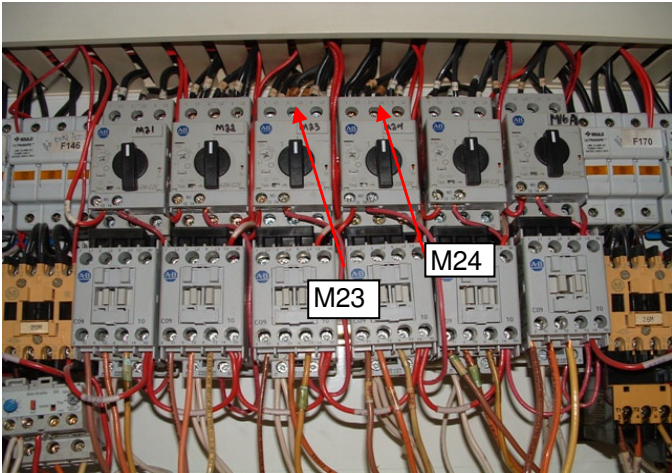
Rated Load: 10 A Measured Load: 7.2 A
% Load 72 %

Ampere Phase A 7.2
Ampere Phase B 7.0
Ampere Phase C 7.1

Ambient Temp.: 20 °C
Comments: Check load, connections etc.

Obj. Priority: 3 Subj. Priority: Avg. Priority:

Repair Check Date:
Notes:



Reserved for Thermogram
after Component Repair

DA Mechanical Services

No.: 6
Job-No.: X85-7854
Date: 11/5/2005

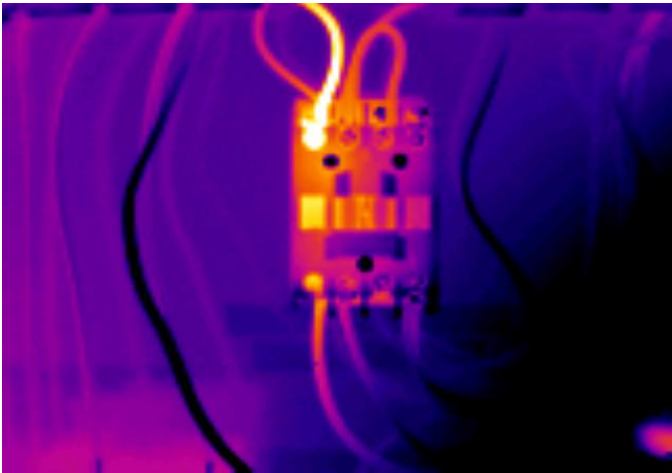
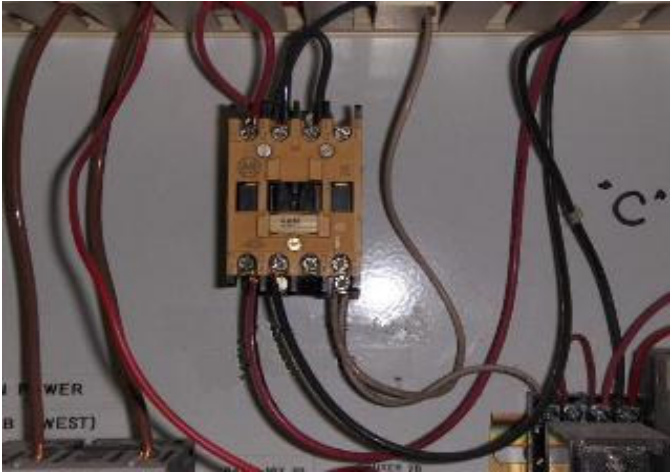
Location: A. BCD Inc.
Room / Building: Process Room B Equipment: MCC-4 Drum Contactor M54

Rated Load:	A	Measured Load:	4.5 A
		% Load	%
Ampere Phase A	4.5		
Ampere Phase B	4.2		
Ampere Phase C	4.1		

Ambient Temp.: 20 °C
Comments: Check load, connections etc.

Obj. Priority: 3 Subj. Priority: Avg. Priority:

Repair Check Date:
Notes:



Reserved for Thermogram
after Component Repair

DA Mechanical Services

No.: 7
Job-No.: X85-7854
Date: 11/5/2005

Location: A. BCD Inc.
Room / Building: Warehouse **Equipment:** MCC-3 Conveyor Panel Fuse

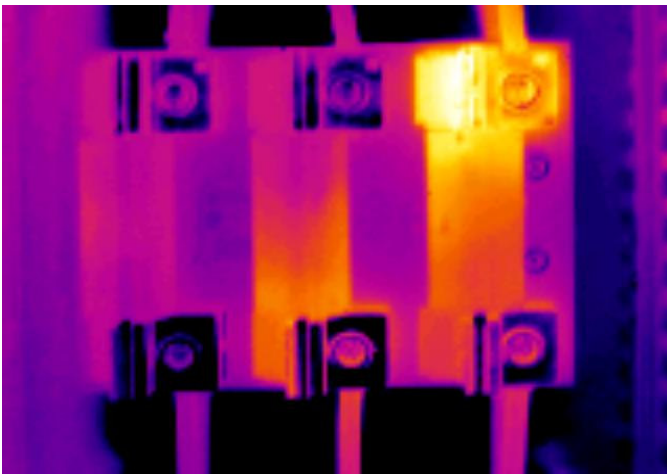
Rated Load:	A	Measured Load:	25.0 A
		% Load	%

Ampere Phase A	25.0
Ampere Phase B	23.0
Ampere Phase C	23.0

Ambient Temp.: 20 °C
Comments: Check connections, clean connections

Obj. Priority: 3 **Subj. Priority:** **Avg. Priority:**

Repair Check Date:
Notes:



**Reserved for Thermogram
after Component Repair**